

Doppstadt

RACCOON

WB620 . WB518

WASH-TROMMEL LINE



Best Solution. Smart Recycling.

[doppstadt.com](https://www.doppstadt.com)





RACCOON WB 518 AND 620

The mobile trommel washer for refuse recycling

Through the simple installation of a conversion kit, a mobile Doppstadt screening machine can be turned into the Raccoon.

But don't be fooled by the system's deceptively cute name, because the Raccoon is a force to be reckoned with! The machine was designed to take on

multiple different recycling tasks at the same time and can be used for the treatment of artificial turfs, agricultural films, root wood or earth, to name but some of its uses. To do so, the Raccoon feeds the input material into a washing drum, where it is brought into contact with water and cleaned due to friction between the individual components.

The spectrum of feed materials ranges from films to roots and track ballast. Alongside different types of washing drums, other extras are available just like for the SM 518 and SM 620 screening machines, for instance, stone grids. Depending on the material, the Raccoon can reach a throughput of 50 to 80 m³/h.

THIS IS DOPPSTADT

Doppstadt is one of the world's leading suppliers of innovative solutions in the field of environmental technology. The company specialises in the treatment and processing of reusable materials obtained from waste, biomass, earth, sand and gravel. Its portfolio includes easy-to-maintain, easy-to-use machines for the most complex and

challenging process technology-related recycling applications such as crushing, separating, sifting, mixing, splitting, wet processing and conveying.

The company employs 700 people in locations all over the world to work on its machines, processes and solutions. The Group has an international network of dealers, with 42 partners in 45 countries.

The Doppstadt Group was founded in 1965 and has centres of expertise at Velbert (prototype development and production), Wülfrath (sales and service), Calbe (series production) and Wilsdruff (water based separation), in Germany.



WASHING DRUM

The washing drum is sealed at the front and is equipped with the desired mesh on the back half.



TRANSFER AREA

The hopper transfers the material to the washing drum, where it is supplied with washing water.



PRODUCT DISCHARGE

The washed and drained product is discharged via the rear conveyor.

PIPING

Pipes for supplying water to the transfer area between the hopper and the drum as well as in the drum itself.



CLEANING BRUSH

The screening drum cleans itself using a rotating, hydraulically folding brush.



DRAWBAR ATTACHMENT

The drawbar attachment enables the machine to be moved by a wheel loader (only on machines with a drawbar).



CENTRAL CONTROL PANEL

Simple operation, precise setting and reading of machine data using the multi-functional display.



MAINTENANCE

Big doors to facilitate optimal maintenance.

WB620



Raccoon conversion kit for SM 518 and SM 620

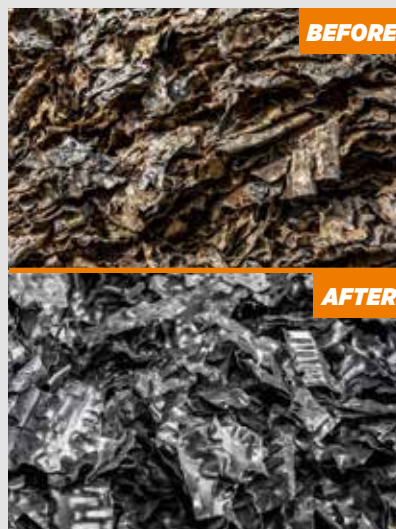
Customers who may not use the Raccoon for washing the whole year round can convert the machine for dry screening until they have material for washing again. Even an existing SM 518 or SM 620 machine can be retrofitted with the Raccoon kit.



PRODUCTION RESULTS

PLASTICS AND FOILS

Thanks to the trailer chassis the Raccoon can be practically moved around on site as well as between facilities, making it perfect for contractors. The spectrum of feed materials ranges from foils to roots and track ballast. Alongside different types of washing drums, other extras are available, just like for the SM 518 and SM 620 screening machines, for instance, stone grids. Depending on the material, the WB 518 can reach a throughput of 50 to 80 m³/h.



STONE GRIDS



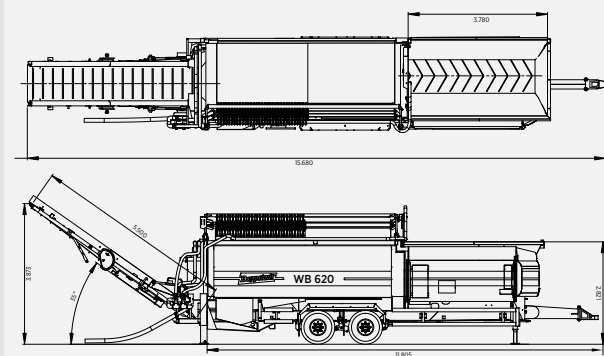
THE MOST IMPORTANT BENEFITS

Track ballast can be washed and subsequently used as ballast again without the spread of vegetation. The same applies for gravel. Wood or foils can be freed from sludge and biofilm and the like in order to recycle them or to reduce the ash content and raise the calorific value.

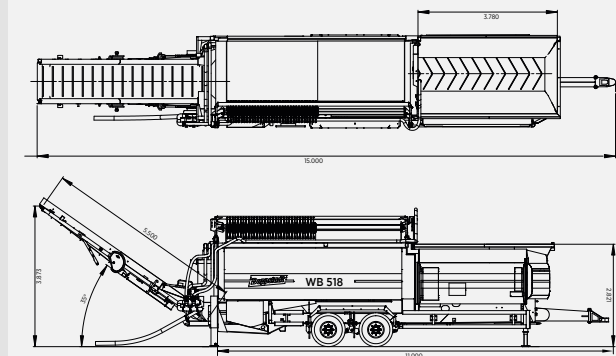
- High quality of the clean end products
- High throughput
- Flexible conversion which can be carried out in a single day

TECHNICAL DETAILS

WB 620	
Total weight	19,000 kg
Chassis	Central axle trailer chassis with tandem axle, for 80 km/h acc. to StVZO, with ABS
Drive	Diesel-hydraulic
Type	DEUTZ TCD 3.6 L4 (Option: electric motor)
Output	85 kW (116 hp) at 1,800 min ⁻¹
Torque	max. 480 Nm
Emission standard	EUROMOT III B/Tier 4i
Fuel tank	300 l
Screen surface	15.1 m ²
Transport dimensions in H x L x W	4,000 mm x 11,805 mm x 2,550 mm
Screening drum diameter/length	2,000 mm/5,500 mm
Mesh size	Optional, 3-15 mm
Mesh type	Optional, square holes, hexagon, offset square, round holes
Material thickness	8 mm
Drum speed	0-20 min
Loading volume	5.0 m ³
Loading width/height	3,750/2,900 mm
Length of discharge conveyors (optional)	Rear: 5,500 mm (3,000 mm*)
Width of discharge conveyors	Rear: 1,000 mm
Belt speed	Rear: 1.6 m/s



WB 518	
Total weight	17,000 kg
Chassis	Central axle trailer chassis with tandem axle, for 80 km/h acc. to StVZO, with ABS
Drive	Diesel-hydraulic
Type	DEUTZ TCD 2.9 L4 (Option: electric motor)
Output	55 kW (75 hp) at rated speed 2,100 min ⁻¹
Torque	max. 300 Nm
Emission standard	EUROMOT III B/Tier 4f
Fuel tank	300 l
Screen surface	9.6 m ²
Transport dimensions in H x L x W	4,000 mm x 11,000 mm x 2,550 mm
Screening drum diameter/length	1,800 mm/4,700 mm
Mesh size	Optional, 3-15 mm
Mesh type	Optional, square holes, hexagon, offset square, round holes
Material thickness	8 mm
Drum speed	0-21 min
Loading volume	5.0 m ³
Loading width/height	3,750/2,900 mm
Length of discharge conveyors (optional)	Rear: 5,500 mm (3,000 mm*)
Width of discharge conveyors	Rear: 800 mm
Belt speed	Rear: 1.1 m/s



Doppstadt Umwelttechnik GmbH
Steinbrink 13, D-42555 Velbert

doppstadt.com

Telefon +49 2052 889-0
info@doppstadt.de